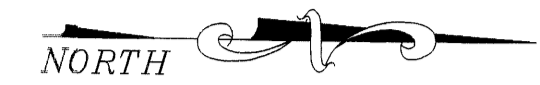


PLAT NO.11

SUMMERFIELD GOLF CLUB PHASE IV-B, A P.U.D.

LYING IN SECTION 35, TOWNSHIP 38 SOUTH, RANGE 41 EAST
MARTIN COUNTY, FLORIDA

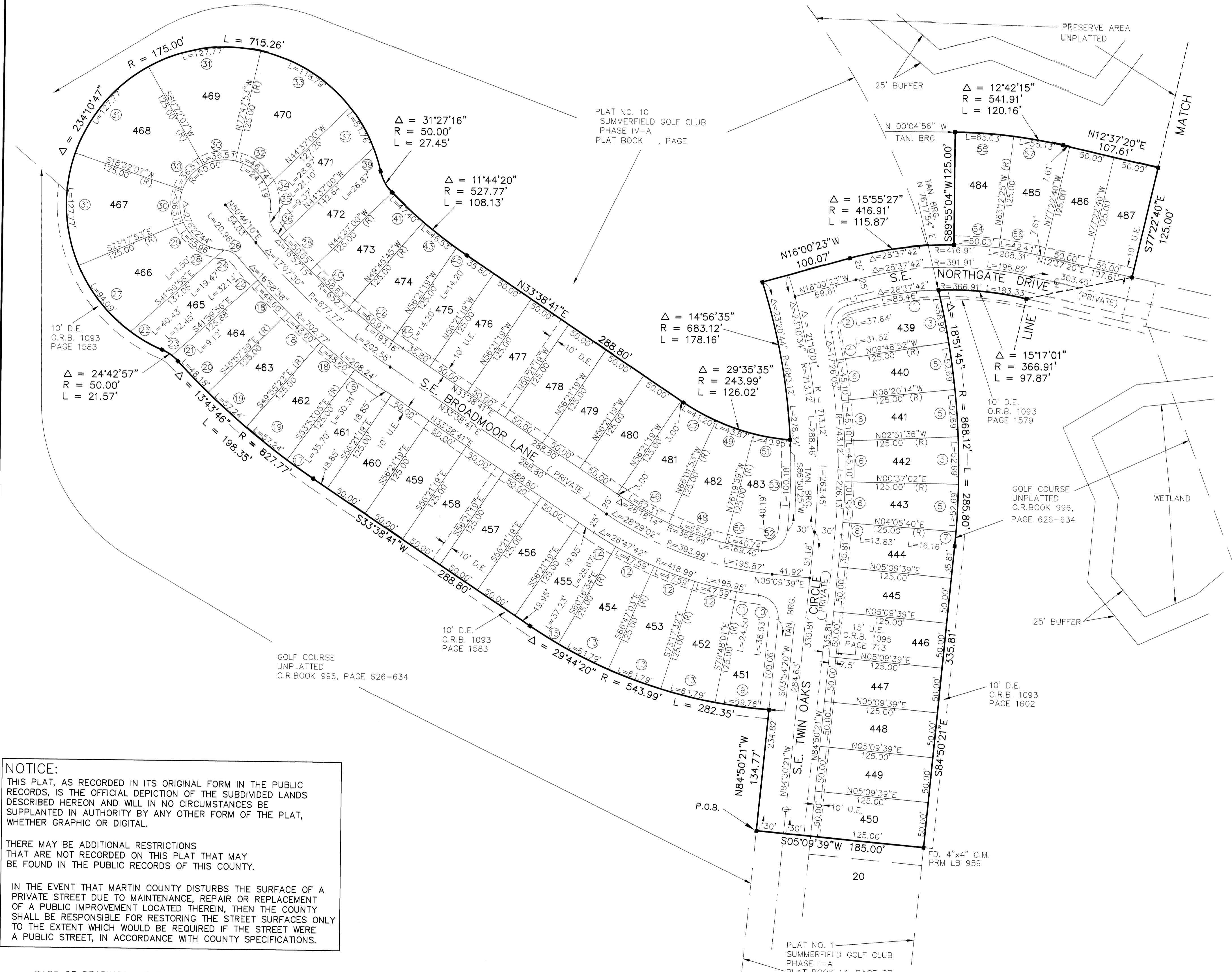


CURVE TABLE				
CURVE	RADIUS	LENGTH	CHORD	DELTA
(1)	366.91'	85.46'	85.26'	13°20'41"
(2)	25.00'	37.64'	34.19'	86°16'04"
(3)	868.12'	58.90'	58.89'	03°53'14"
(4)	743.12'	31.52'	31.52'	02°25'50"
(5)	868.12'	52.69'	52.68'	03°28'38"
(6)	743.12'	45.10'	45.09'	03°28'38"
(7)	868.12'	16.16'	16.16'	01°03'59"
(8)	743.12'	13.83'	13.83'	01°03'59"
(9)	543.99'	59.76'	59.73'	06°17'38"
(10)	25.00'	38.53'	34.83'	88°18'40"
(11)	418.99'	24.50'	24.49'	03°21'00"
(12)	418.99'	47.59'	47.57'	06°30'29"
(13)	543.99'	61.79'	61.76'	06°30'29"
(14)	418.99'	28.67'	28.67'	03°55'15"
(15)	543.99'	37.23'	37.22'	02°28'15"
(16)	702.77'	30.31'	30.30'	02°28'15"
(17)	827.77'	35.70'	35.69'	02°28'15"
(18)	702.77'	48.60'	48.59'	03°57'43"
(19)	827.77'	57.24'	57.23'	03°57'43"
(20)	827.77'	48.18'	48.18'	03°20'05"
(21)	50.00'	9.12'	9.11'	10°27'13"
(22)	702.77'	32.14'	32.14'	02°37'14"
(23)	50.00'	12.45'	12.41'	14°15'44"
(24)	25.00'	19.47'	18.98'	44°36'47"
(25)	175.00'	40.43'	40.34'	13°14'16"
(26)	25.00'	20.96'	20.35'	48°02'40"
(27)	175.00'	94.09'	92.98'	30°48'21"
(28)	25.00'	1.50'	1.50'	03°25'54"
(29)	50.00'	55.96'	53.08'	64°07'30"
(30)	50.00'	36.51'	35.70'	41°50'00"
(31)	175.00'	127.77'	124.95'	53°33'32"
(32)	50.00'	46.74'	45.06'	53°33'32"
(33)	175.00'	118.79'	116.52'	38°53'27"
(34)	50.00'	28.87'	28.56'	33°11'43"
(35)	25.00'	21.10'	20.48'	48°21'23"
(36)	652.77'	9.37'	9.37'	00°49'21"
(37)	175.00'	51.76'	51.57'	16°56'48"
(38)	652.77'	50.05'	50.04'	04°23'35"
(39)	175.00'	26.87'	26.85'	08°47'55"
(40)	652.77'	58.63'	58.61'	05°08'46"
(41)	527.77'	47.40'	47.39'	05°08'46"
(42)	652.77'	60.91'	60.89'	05°20'47"
(43)	527.77'	46.53'	46.51'	05°03'05"
(44)	652.77'	14.20'	14.20'	01°14'46"
(45)	527.77'	14.20'	14.20'	01°32'29"
(46)	368.99'	62.31'	62.24'	09°40'34"
(47)	243.99'	41.20'	41.16'	09°40'34"
(48)	368.99'	66.34'	66.25'	10°18'06"
(49)	243.99'	43.87'	43.81'	10°18'06"
(50)	368.99'	40.74'	40.72'	06°19'34"
(51)	243.99'	40.95'	40.90'	09°36'56"
(52)	25.00'	40.19'	36.00'	92°05'56"
(53)	683.12'	100.18'	100.09'	08°24'09"
(54)	416.91'	50.03'	50.00'	08°52'31"
(55)	541.91'	65.03'	64.99'	08°52'31"
(56)	416.91'	42.41'	42.40'	05°49'44"
(57)	541.91'	55.13'	55.11'	05°49'44"

LINE	DIRECTION	DISTANCE
L1	N16°00'23"W	16.24'

LEGEND

- G.C.C.E. = GOLF CART CROSSING EASEMENT
- U.E. = UTILITY EASEMENT
- D.E. = DRAINAGE EASEMENT (PRIVATE)
- = PERMANENT CONTROL POINT
- = PERMANENT REFERENCE MONUMENT (SET) LS 3690
- = CENTERLINE
- FD. = FOUND
- P.O.B. = POINT OF BEGINNING
- (R) = RADIAL
- R/W = RIGHT-OF-WAY
- O.R.B. = OFFICIAL RECORD BOOK
- Δ = DELTA
- R = RADIUS
- L = LENGTH
- TAN. = TANGENT
- BRG. = BEARING

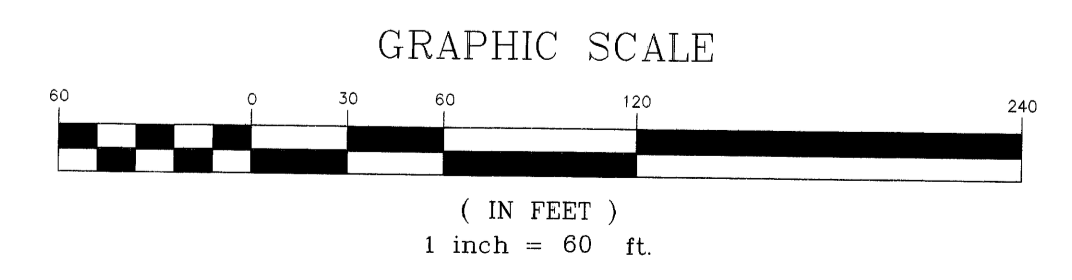


NOTICE:
THIS PLAT, AS RECORDED IN ITS ORIGINAL FORM IN THE PUBLIC RECORDS, IS THE OFFICIAL DEPICTION OF THE SUBDIVIDED LANDS DESCRIBED HEREON AND WILL IN NO CIRCUMSTANCES BE SUPPLANTED IN AUTHORITY BY ANY OTHER FORM OF THE PLAT, WHETHER GRAPHIC OR DIGITAL.

THERE MAY BE ADDITIONAL RESTRICTIONS THAT ARE NOT RECORDED ON THIS PLAT THAT MAY BE FOUND IN THE PUBLIC RECORDS OF THIS COUNTY.

IN THE EVENT THAT MARTIN COUNTY DISTURBS THE SURFACE OF A PRIVATE STREET DUE TO MAINTENANCE, REPAIR OR REPLACEMENT OF A PUBLIC IMPROVEMENT LOCATED THEREIN, THEN THE COUNTY SHALL BE RESPONSIBLE FOR RESTORING THE STREET SURFACES ONLY TO THE EXTENT WHICH WOULD BE REQUIRED IF THE STREET WERE A PUBLIC STREET, IN ACCORDANCE WITH COUNTY SPECIFICATIONS.

BASE OF BEARINGS: THE SOUTH LINE OF SECTION 35, TOWNSHIP 38 SOUTH, RANGE 41 EAST HAVING A BEARING OF N 89°50'53" E AND ALL OTHER BEARINGS SHOWN HEREON ARE RELATIVE THERETO.



ALLEN E. BECK, INC.
PROFESSIONAL LAND SURVEYORS
608 S.W. BAYSHORE BLVD.
PORT ST. LUCIE, FLORIDA 34983
(561) 340-1432 LB 6790

SCALE 1" = 60' JOB NO. 00-5459
SHEET 2 OF 3